

ACH Adjustable horizontal plate clamps

Working load limit (WLL) 1300 - 10000 kg

The ACH horizontal plate clamps offer superb flexibility because of the large adjustable jaw opening. The jaw is adjusted using a simple ratchet mechanism.

These clamps are to be used in pairs and are especially suited to the transportation of large plate bundles.

Workmanship and parts

These plate clamps are service-friendly, making it easy to exchange parts, which are readily available. Clamp repairs must be done by a trained person.

Product group: I2

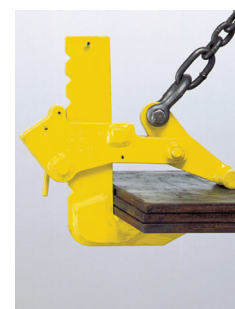
INFO

The sling angle from the vertical must not exceed 45°!

The capacity applies to a pair of lifting clamps.

Use a spreader beam for larger plates.

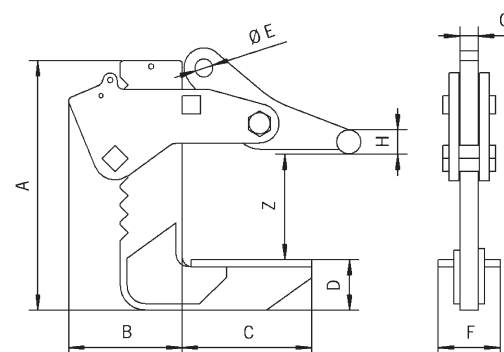
Chain slings and shackle are not included.



Technical data ACH

Model	Art.-No.	*WLL kg	Jaw capacity Z mm	*Weight kg
ACH1.3L	N50601624	1300	0 - 250	17
ACH3.3L	N50601626	3300	0 - 250	28
ACH6.6L	N50601628	6650	0 - 250	64
ACH10.0	192065646	10000	50 - 300	90

*Per pair, up to an angle of 45° from the vertical



Dimensions ACH

Model	ACH1.3L	ACH3.3L	ACH6.6L	ACH10.0
A, mm	298	321	405	495
B, mm	122	130	185	210
C, mm	160	160	210	240
D, mm	41	50	82	100
Ø E, mm	20	23	30	40
F, mm	80	80	100	120
G, mm	20	25	30	50
Ø H, mm	25	25	40	40