



PH Pipe hooks

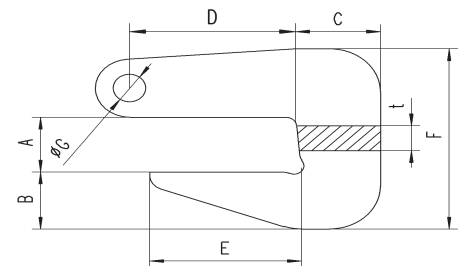
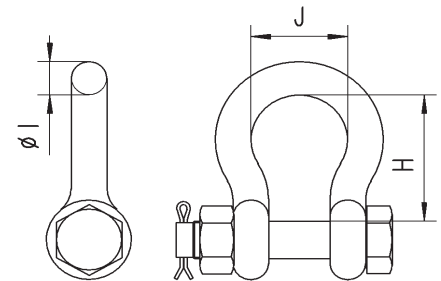
Working load limit (WLL) 2000 - 10000 kg

The PH pipe hooks are used in pairs for the safe transport of pipes.

Product group: I2

INFO

The shackles are included with the hooks, but the chains are not supplied.



60° - 90° Chain top angle / 30° - 45° from vertical

Model	Art.-No.	*WLL kg	Pipe wall thickness kg	*Weight kg
PH2/A	N53508004	2000	0 - 40	2.4
PH4/A	N53508005	4000	0 - 50	5.6
PH6/A	N53508006	6000	0 - 60	8.3
PH8/A	192048192	8000	0 - 70	13.5
PH10/A	N53508008	10000	0 - 80	17.8

*Per pair

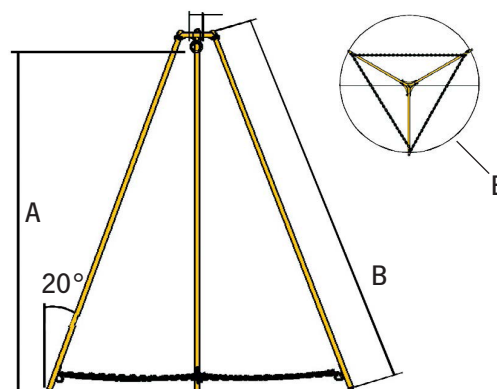
SL Shearlegs

Working load limit (WLL) 500 - 3000 kg

The Camlok Shearlegs have been designed to be simple, easy to erect and operate. Each set of shearlegs are supplied fitted with safety chains and a large eyebolt for the suspension of hand operated lifting devices.

These shearlegs must not be used for lifting personnel.

Product group: I4



Technical data SL

Model	Art.-No. standard (spike)	Art.-No. flat (rubber lined)	WLL kg	A mm	B mm	E mm	Weight kg
SL0.500/2	N4300000262	N4300012471	500	2000	2254	1800	24
SL1000/2	N4300000256	192034214	1000	2000	2276	1816	33
SL1000/3	N4300000257	192059776	1000	3000	3340	2544	44
SL2000/3	N4300000258	N4300015297	2000	3000	3366	2554	71
SL3000/3	N4300014414	N4300013638	3000	3000	3409	2730	88