



RH/WH Horizontal plate clamps

Working load limit (WLL) 1500 - 5000 kg

This range of plate clamps have been designed to be used in pairs. For the horizontal transportation of individual and bundled plate. The RH clamps are fitted, as standard, with a steel roller to reduce any potential marking of the plate. The WH model is fitted with a serrated steel plate.

These clamps are sold and must be used in pairs. They should always be used with a two legged chain sling (not supplied).

Workmanship and parts

These plate clamps are service-friendly, making it easy to exchange parts, which are readily available. Clamp repairs must be done by a trained person.

Product group: I2

INFO

The angle from the vertical must not exceed 45°!

Technical data RH/WH

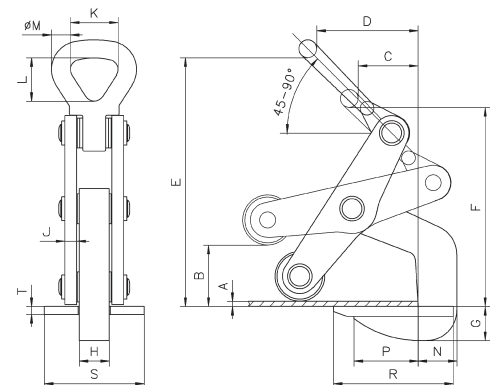
| Model | Art.-No. | *WLL kg | Jaw capacity mm | **Weight kg |
|--------------------|-----------|------------|--------------------|----------------|
| RH1500 with roller | N54509101 | 1500 | 5 - 60 | 5.6 |
| RH2500 with roller | N54509102 | 2500 | 10 - 70 | 10.3 |
| RH3500 with roller | N54509103 | 3500 | 10 - 80 | 13.4 |
| RH5000 with roller | N54509104 | 5000 | 10 - 102 | 27.7 |
| WH1500 with plate | N54509105 | 1500 | 5 - 60 | 5.7 |
| WH3500 with plate | N54509107 | 3500 | 10 - 80 | 13.5 |

*Per pair, angle from the vertical max. 45°

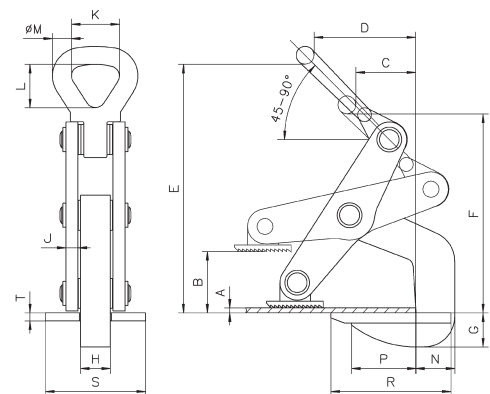
**Per unit

Dimensions RH/WH

| Model | RH1500 with roller | RH2500 with roller | RH5000 with roller | RH5000 with roller | WH1500 with plate | WH3500 with plate |
|---------|-----------------------|-----------------------|-----------------------|-----------------------|----------------------|----------------------|
| A, mm | 5 | 10 | 10 | 10 | 5 | 10 |
| B, mm | 60 | 70 | 80 | 102 | 60 | 80 |
| C, mm | 60 | 75 | 90 | 110 | 60 | 90 |
| D, mm | 105 | 130 | 162 | 170 | 105 | 162 |
| E, mm | 250 | 315 | 345 | 425 | 250 | 345 |
| F, mm | 200 | 275 | 292 | 345 | 200 | 292 |
| G, mm | 31 | 45 | 55 | 57 | 22 | 48 |
| H, mm | 30 | 30 | 30 | 45 | 30 | 30 |
| J, mm | 12 | 12 | 15 | 20 | 12 | 15 |
| K, mm | 50 | 64 | 64 | 89 | 50 | 64 |
| L, mm | 73 | 92 | 92 | 130 | 73 | 92 |
| Ø M, mm | 18 | 25 | 25 | 35 | 18 | 25 |
| N, mm | 36 | 58 | 65 | 80 | 36 | 65 |
| P, mm | 65 | 77 | 105 | 120 | 65 | 105 |
| R, mm | 120 | 150 | 185 | 210 | 120 | 185 |
| S, mm | 100 | 100 | 100 | 120 | 100 | 100 |
| T, mm | 10 | 10 | 10 | 12 | 10 | 10 |



RH with roller



WH with plate